



**Brookstone®**

---

S10 Deep-Kneading Shiatsu  
& Tapping Seat Topper

## TABLE OF CONTENTS

Cautions and Warnings .....	1
FCC Information .....	7
Location of Parts and Controls .....	8
Operation.....	8
Using the Controller .....	10
Troubleshooting .....	14
Care and Maintenance.....	14
Specifications.....	15
Warranty.....	16

## CAUTION

- TO REDUCE THE RISK OF ELECTRIC SHOCK, DO NOT REMOVE COVER. THERE ARE NO SERVICEABLE PARTS INSIDE.
- TO REDUCE THE RISK OF FIRE OR ELECTRIC SHOCK, DO NOT EXPOSE THIS UNIT TO RAIN OR MOISTURE.



The lightning flash with arrow-head symbol within an equilateral triangle is intended to alert the user to the presence of uninsulated “dangerous voltage” within the unit’s enclosure that may be of sufficient magnitude to constitute a risk of electric shock.



The exclamation point within an equilateral triangle is intended to alert the user to the presence of important operating and maintenance (servicing) instructions in the literature accompanying the unit.

**This massager is intended for household use only.**

## **SAVE THESE INSTRUCTIONS**

## **IMPORTANT SAFETY INSTRUCTIONS**

All of the safety and operating instructions should be read, adhered to and followed before using this massager.

**⚠ DANGER** – To reduce the risk of electric shock:

1. Always unplug this appliance from the electrical outlet immediately after using and before cleaning.
2. Do not reach for an appliance that has fallen into water. Unplug immediately.
3. Do not use while bathing or in a shower.
4. Do not place or store appliance where it can fall or be pulled into a tub or sink. Do not place in or drop into water or other liquid.
5. If liquid is accidentally spilled onto the massager, remove the power plug from the electrical outlet immediately. Do not use wet hands to connect or disconnect the power plug from the electrical outlet.
6. Do not operate during a lightning storm.
7. Although operation will be stopped automatically by the Auto-Timer function, always remember to turn off the main power switch after use.
8. Do not place the power cord under the massager or under any other heavy objects.
9. Do not wind the power cord around the massager as this may damage the cord and result in a fire or electric shock.
10. Do not operate the massager with a damaged cord or with an extension cord.
11. Do not use the massager if the electrical outlet is loose.
12. Check that the Alternating Current (AC) voltage corresponds with the specification indicated for the massager.

**⚠ WARNING** – To reduce the risk of burns, fire, electric shock or injury to persons:

1. This massager should never be left unattended when plugged in. Unplug from outlet when not in use, and before putting on or taking off parts.
2. Do not operate under blanket or pillow. Excessive heating can occur and cause fire, electric shock or injury to persons.
3. Close supervision is necessary when this massager is used by, on or near children, invalids or disabled persons.
4. Use this massager only for its intended use as described in this manual. Do not use attachments not recommended by Brookstone.
5. Never operate this massager if it has a damaged cord or plug, if it is not working properly, if it has been dropped or damaged, or dropped into water. Contact Brookstone Customer Service at 800-292-9819.
6. Do not move or carry this massager by the power cord or use cord as a handle.
7. Keep the cord away from heated surfaces.
8. Never operate the massager with the air openings blocked. Keep the air openings free of lint, hair and the like. Never operate on a soft surface such as a bed or couch where the air openings may be blocked.
9. Never drop or insert any object into any opening.
10. Do not use outdoors.
11. Do not operate where aerosol (spray) products are being used or where oxygen is being administered.

12. To disconnect, press the Power button on the controller to the OFF position, then remove the plug from the outlet.
13. Use heated surfaces carefully. May cause serious burns. Do not use over insensitve skin areas or in the presence of poor circulation. The unattended use of heat by children or disabled persons may be dangerous.
14. Never use pins or other metallic fasteners with this massager.
15. Never remove the cover from this massager. Do not use the massager when the upholstery is ripped, torn, or removed. This may cause injury or malfunction. Carefully examine the covering before each use. Call for service if the covering shows any sign of deterioration, such as blistering, peeling, cracking, or ripping.
16. Keep dry - do not wet. Do not operate in a wet or moist condition. Do not use the massager when your body is wet. Do not operate this massager with wet hands.
17. Do not use massager in close proximity to loose clothing or jewelry.
18. Keep long hair away from massager while in use.
19. Do not insert your hand or foot along the paths of the massage rollers during use as this may cause injury.
20. This massager is not intended for use by children or persons with reduced physical, sensory or mental capabilities, or lack of experience and knowledge, unless they have been given supervision or instruction concerning use of this massager by a person responsible for their safety.
21. Children should be supervised to ensure that they do not play with this massager.
22. Any individual who may be pregnant, or recently gave birth, has a heart

condition, or a pacemaker, suffers from diabetes or other sensory impairment, phlebitis and/or thrombosis, joint dysfunction, inflammation or injuries, weak bones, osteoporosis, a high fever, an abnormal or curved spine, is at an increased risk of developing blood clots, has pins/screws/artificial joints or other medical devices implanted in his/her body, is being treated for a medical condition or physical injury or is under a doctor's care should consult with a medical professional before using this massager.

23. This product is not intended for self-treatment of conditions that should be managed by a qualified healthcare provider.
24. Consult your physician before using this massager.
25. This massager is designed as a non-professional massager to soothe tired and aching muscles. It is not intended to be a substitute for medical attention. If your ailments and symptoms persist or worsen after use, contact your physician immediately.
26. Do not use this massager if you are not feeling well.
27. Stop operation immediately if you experience any discomfort.
28. Do not fall asleep during the massage session.
29. Do not operate after taking pain killers, sedatives or alcohol.
30. Do not use this massager in combination with other therapeutic equipment or electric blanket, etc., as this may result in ineffectiveness or injury.
31. Do not stand on or in this massager. Use only while seated.
32. Do not disassemble any part of the massager. Touching the internal components may result in malfunction or electric shock.

33. The massager must only be professionally serviced or repaired. Do not attempt to disassemble or repair the massager yourself.
34. Do not operate for more than 20 continuous minutes. Turn off the massager and allow it to rest (cool) for 40 minutes before re-using. This will prolong the life of the massager.
35. Do not perform continuous massage on the same spot of your body for more than 5 minutes at a time as this may result in excessive stimulation and may have adverse effects.
36. Never use the massager on open skin eruptions, swollen or inflamed areas.
37. Do not apply massage rollers directly on the head, elbow or knee joints, torso or abdomen.
38. If the power goes off during use, be sure to press the Power Button to the OFF position and pull the power plug out from the socket to prevent damage from occurring when the power is restored.
39. Do not expose to humidity, dust, or operating temperatures outside the range of 32° to 113° F (0° to 45° C).

## FCC INFORMATION

**Caution:** Changes or modifications not expressly approved by the party responsible for compliance could void the user's authority to operate the equipment.

This equipment has been tested and found to comply with the limits for a Class B Digital Device, pursuant to Part 15 of the FCC Rules. These limits are designed to provide reasonable protection against harmful interference in a residential installation. This equipment generates, uses, and can radiate radio frequency energy and, if not installed and used in accordance with the instructions, may cause harmful interference to radio communications. However, there is no guarantee that interference will not occur in a particular installation.

If this equipment does cause harmful interference to radio or television reception, which can be determined by turning the equipment off and on, the user is encouraged to try to correct the interference by one or more of the following measures:

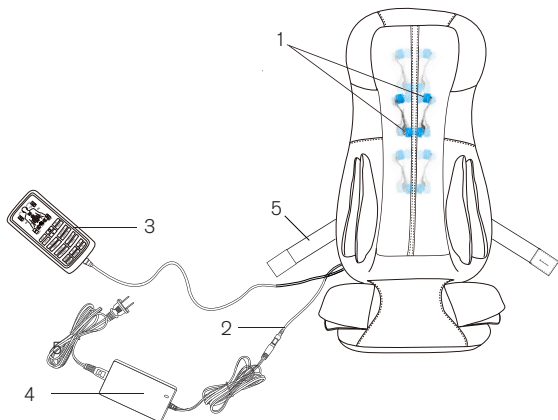
- Reorient or relocate the receiving antenna.
- Increase the distance between the equipment and receiver.
- Connect the equipment to an outlet on a circuit different from that to which the receiver is connected.
- Consult the dealer or an experienced radio/TV technician for help.

This equipment complies with part 15 of the FCC Rules. Operation is subject to the following two conditions:

1. This equipment may not cause harmful interference.
2. This equipment must accept any interference received, including interference that may cause undesired operation.

## LOCATION OF PARTS AND CONTROLS

1. Massage Nodes
2. Power Cord
3. Controller
4. Power Adapter
5. Hook-and-Loop Strap



## OPERATION

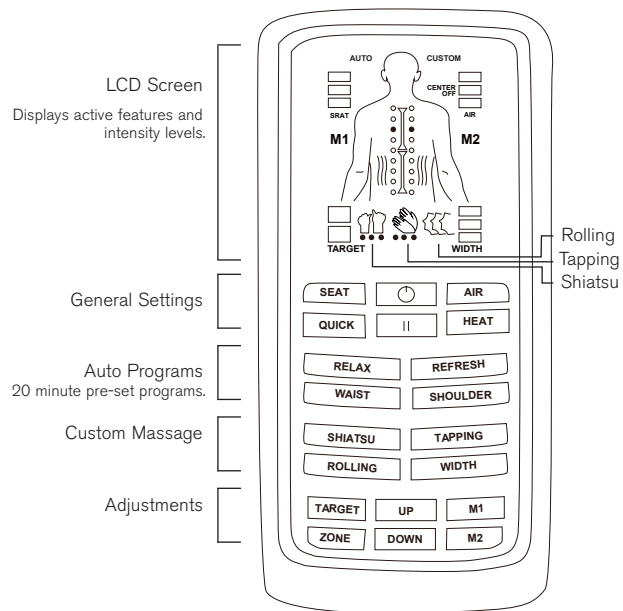
1. Place the massager on a sturdy chair. Optionally, secure the massager to your chair with the attached hook-and-loop strap.
2. Insert the Power Adapter into the Power Cord.
3. Plug the Power Adapter into an electrical outlet.



NOTE: To reduce the risk of electric shock, this product has a polarized plug (one blade is wider than the other). As a safety feature, this plug will fit in a polarized outlet only one way. If the plug does not fit fully in the outlet, reverse the plug. If it still does not fit, contact a qualified electrician to install the proper outlet. Do not alter the plug in any way.

4. Press the Power button on the controller to turn the massager on. See the illustration on Page 10 for the location of the Power button.
5. The massage nodes travel to the top of the track and the UP and DOWN buttons on the controller blink. Optionally, press the UP and DOWN buttons to set the desired height that the nodes should travel to during your massage. By default, the maximum height is the top of the node track. (To retain the node height setting for future sessions, press M1 or M2, as described on Page 13.) After several seconds of no input, the height is set and the blinking stops.
6. Select your massage options, as described on Pages 11 and 12.
7. Depending on the massage option selected, during your massage you can adjust the roller width, neck position, activate or deactivate heat, and other options, as described on Pages 11 and 12.
8. The massage and the controller both shut off after 20 minutes of continuous use.
9. After the massage is completed, the rollers will return to the home position at the bottom of the track.
10. Unplug the Power Adapter from the electrical outlet when the massager is not in use.

## USING THE CONTROLLER



	BUTTON	DESCRIPTION
General Settings	Power	Press once to turn on; press a second time to turn off.
	Pause	Press once to pause the massage; press a second time to resume. All air bags will deflate when a program is paused.
	Seat	Adds vibration to the seat. Press up to 3 times to increase intensity. LCD displays intensity. Press a fourth time to turn vibration off.
	Air	Adds air/compression massage to the lumbar and seat. Press up to 3 times to increase intensity. Press a fourth time to turn all air off. Press and hold to turn only the center seat airbag on or off. The words Center Off will illuminate on the controller to indicate that it has been disabled.
	Quick	Starts a 6 minute program demonstrating all features of the S10. As each massage type begins, its button illuminates. Adjust the speed by pressing the illuminated massage type button. Default zone is full body with heat on.
	Heat	Adds heat to the lumbar region. Press once to turn on, press a second time to turn off. Heat can be added to any auto program.
Auto Programs	Relax	Press once to turn on; press a second time to turn off. Features Shiatsu and Rolling. Default zone is full body with heat ON.
	Refresh	Press once to turn on; press a second time to turn off. Features Shiatsu and Tapping. Default zone is full body. Heat is OFF.
	Waist	Press once to turn on; press a second time to turn off. Features Shiatsu, Tapping and Rolling. Default zone is set to lower body. Heat is OFF.
	Shoulder	Press once to turn on; press a second time to turn off. Features Shiatsu, Tapping and Rolling. Default zone is upper body. Heat is OFF.

	BUTTON	DESCRIPTION
Custom Massage	Shiatsu	Press for Shiatsu massage. Press up to 3 times to increase speed. Press a 4th time to turn off. Can add Tapping at the same time. Default zone is full body.
	Tapping	Press for Tapping massage. Press up to 3 times to increase speed. Press a 4th time to turn off. Can add Shiatsu at the same time. Default zone is full body. To adjust the massage feel, use the width button to vary the node width.
	Rolling	Press for Rolling massage. Press again to turn off. Cannot be combined with Tapping or Shiatsu. To adjust the massage feel, use the width button to vary the node width.
	Width	Press to cycle through the 3 massage node roller widths: Narrow, Medium, and Wide. The default is Medium. Used with Rolling and Tapping massages. Cannot be used in Shiatsu mode.
Adjustments	Target	Press once and the nodes will stop at their current location. Press a second time and the nodes will move up and down, but will remain in the current zone. Press a third time and the nodes will resume full track movement.
	Zone	Press to select the area of the back that you would like the massage to focus on. Each press cycles through the full body, upper body, and lower body zones.
	Up	While the rollers are moving, press and hold to move the rollers up to the desired location. Used in the Target mode and in the M1 or M2 memory setup.
	Down	While the rollers are moving, press and hold to move the rollers down to the desired location. Used in the Target mode and in the M1 or M2 memory setup.

	BUTTON	DESCRIPTION
	M1	Memory setting 1 for preset node height adjustment. After powering on the massager, set the node height adjustment as described on Page 9. To retain the height adjustment setting for future massage sessions, press and hold M1 for two seconds. Once saved, you can use the preset height setting by pressing M1 before selecting your massage. To reset M1, you must restart the massager.
	M2	Memory setting 2 for preset node height adjustment. After powering on the massager, set the node height adjustment as described on Page 9. To retain the height adjustment setting for future massage sessions, press and hold M2 for two seconds. Once saved, you can use the preset height setting by pressing M2 before selecting your massage. To reset M2, you must restart the massager.



## TROUBLESHOOTING

PROBLEM	POSSIBLE CAUSE/ACTION
Frictional sound of rollers against backrest cover, or there is a motor sound during operation	These sounds are the result of normal mechanical operation and are not a malfunction.
Does not start	Ensure that the power plug is firmly connected, the power adapter is firmly plugged in, and the voltage at the electrical outlet is adequate. After prolonged use, the massager motors may need to cool down. Wait 30 minutes and try again.
The rollers stop during the massage session	The roller mechanism may be stalled when subjected to excessive force. Release the pressure and try again.

## CARE AND MAINTENANCE

- Wipe dust and dirt off the massager with a dry, soft cloth after use.
- Keep the massager clean and away from places of high humidity.

## SPECIFICATIONS

Power Supply.....	AC 100V-240V
Power Consumption.....	60W
Power Frequency .....	50/60 Hz
Auto Timer .....	20 Minutes
Weight.....	Approx. 32.1 lbs (14.56 kg)
Dimensions.....	Approx. 37 x 9.7 x 19.4 in. (94 x 25 x 49 cm)

## ONE (1) YEAR LIMITED WARRANTY

Brookstone® warrants this product against defects in materials and/or workmanship under normal use for a period of ONE (1) YEAR from the date of purchase by the original purchaser ("Warranty Period"). If a defect arises and a valid claim is received within the Warranty Period, at its option, Brookstone will either 1) repair the defect at no charge, using new or refurbished replacement parts, or 2) replace the product with a new product that is at least functionally equivalent to the original product, or 3) if the product was purchased through Brookstone, provide Brookstone store credit in the amount of the purchase price of the original product. A replacement product or part, including a user-installable part installed in accordance with instructions provided by Brookstone, assumes the remaining warranty of the original product. When a product or part is exchanged, any replacement item becomes your property and the replaced item becomes Brookstone's property. When a store credit is given, the original product must be returned to Brookstone and becomes Brookstone's property.

**Obtaining Service:** To obtain warranty service, call Brookstone Limited Warranty Service at 1-800-292-9819. Please be prepared to describe the product that needs service and the nature of the problem. A purchase receipt is required. All repairs and replacements must be authorized in advance. Service options, parts availability and response times will vary. You are responsible for delivery and the cost of delivery of the product or any parts to the authorized service center for replacement, per our instructions.

**Limits and Exclusions:** Coverage under this Limited Warranty is limited to the United States of America, including the District of Columbia and the U.S. Territories of Guam, Puerto Rico, and the U.S. Virgin Islands. This Limited Warranty applies only to products manufactured for Brookstone that can be identified by the "Brookstone" trademark, trade name, or logo affixed to them or their packaging. The Limited

Warranty does not apply to any non-Brookstone products. Manufacturers or suppliers other than Brookstone may provide their own warranties to the purchaser, but Brookstone, in so far as permitted by law, provides these products "as is." This warranty does not apply to: a) damage caused by failure to follow instructions relating to product's use or the installation of components; b) damage caused by accident, abuse, misuse, fire, floods, earthquake or other external causes; c) damage caused by service performed by anyone who is not a representative of Brookstone; d) accessories used in conjunction with a covered product; e) a product or part that has been modified to alter functionality or capability; f) items intended to be periodically replaced by the purchaser during the normal life of the product including, without limitation, batteries or light bulbs; g) any product sold "as is" including, without limitation, floor demonstration models and refurbished items; or h) a product that is used commercially or for a commercial purpose.

**BROOKSTONE SHALL NOT BE LIABLE FOR INCIDENTAL OR CONSEQUENTIAL DAMAGES RESULTING FROM THE USE OF THIS PRODUCT, OR ARISING OUT OF ANY BREACH OF THIS WARRANTY. TO THE EXTENT PERMITTED BY APPLICABLE LAW, BROOKSTONE DISCLAIMS ANY AND ALL STATUTORY OR IMPLIED WARRANTIES, INCLUDING, WITHOUT LIMITATION, WARRANTIES OF MERCHANTABILITY, FITNESS FOR A PARTICULAR PURPOSE AND WARRANTIES AGAINST HIDDEN OR LATENT DEFECTS. IF BROOKSTONE CANNOT LAWFULLY DISCLAIM STATUTORY OR IMPLIED WARRANTIES, THEN TO THE EXTENT PERMITTED BY LAW, ALL SUCH WARRANTIES SHALL BE LIMITED IN DURATION TO THE DURATION OF THIS EXPRESS WARRANTY.**

Some states disallow the exclusion or limitation of incidental or consequential damages or how long an implied warranty lasts, so the above exclusions or limitations may not apply to you. This warranty gives you specific legal rights and you may also have other rights, which vary from state to state.

Find thousands more  
great ideas online

**Brookstone®**

324949

Rev 2

© Brookstone 2017

Brookstone.com • 1-800-846-3000  
1 Innovation Way, Merrimack, New Hampshire 03054