

## IMPORTANT LIMITED WARRANTY AND SAFETY INSTRUCTIONS

### FIZZICS LIMITED ONE YEAR WARRANTY

Fizzics Group, LLC warrants that your beer system will be free of defects in materials or workmanship **under normal use** for a period of one year from the original date of purchase.

THE FIZZICS LIMITED WARRANTY DOES NOT COVER THE USE OF ANY TYPE OF BEVERAGE EXCEPT BEER AND WATER. USING OTHER BEVERAGES OR LIQUIDS WITH THE FIZZICS SYSTEM OTHER THAN BEER OR WATER WILL VOID THE FIZZICS LIMITED WARRANTY.

Fizzics will at its option, either repair or replace a defective system without charge, upon its receipt of proof of the date of purchase to be supplied by the owner of the product and a Fizzics supplied RA number. If a replacement system is necessary to service this warranty, the replacement system may be new or a reconditioned unit. If a replacement is sent, a new limited one year warranty will be applied to the replacement system. This warranty only applies to Fizzics systems sold in the United State and Canada. This warranty gives the owner specific legal rights, and may also include other rights that vary from state to state, or in Canada from province to province. Some states or provinces do not allow the exclusion or limitations of incidental or consequential damages. So the above limitation or exclusion may not apply to you, depending on the state or province of your purchase.

#### What is not covered by the Fizzics Limited Warranty?

THIS WARRANTY DOES NOT COVER CONSEQUENTIAL OR INCIDENTAL DAMAGES SUCH AS:

- USING ANY LIQUID OR BEVERAGE THAT IS NOT BEER OR WATER.
- PROPERTY DAMAGE.
- INCIDENTAL COST AND EXPENSES RESULTING FROM ANY BREACH OF THIS WARRANTY, EVEN IF FORESEEABLE.
- PHYSICAL DAMAGE TO THE PRODUCT CAUSED BY IMPROPER OR ABNORMAL USE, MISUSE, NEGLIGENCE OR ACCIDENT.
- PROBLEMS ARISING FROM OTHER THAN DEFECTS IN MATERIALS OR WORKMANSHIP.

#### Other Limitations

This warranty is exclusive and is in lieu of any other expressed warranty, whether written or oral. Fizzics specifically disclaims all other warranties with respect to the Fizzics system, including any implied warranty of merchantability or fitness for any particular purpose. Some states or provinces do not allow disclaimers of such implied warranties or limitations on how long an implied warranty lasts. So the above limitation may not apply, depending on the state or province of the original purchase.

#### What to do for Warranty Service

**During the first thirty (30) days, a defective product is eligible for over-the-counter exchange at the retailer from whom it was purchased.**

After thirty (30) days, the defective product should be returned to the Fizzics' authorized service center. For the shipping address of the authorized service center, please follow the instructions of the Warranty Return Form available at [www.fizzics.com](http://www.fizzics.com)

Your product will be repaired or replaced if examination by the service center determines the product is defective. Products that are received damaged as a result of shipping will require you to file a claim with the carrier prior to repair. A product received with missing parts or with damage due to abuse, inadequate packaging modification or some other noncompliance with this limited warranty will be returned to un-opened.

**Note:** A product received which was not made by Fizzics or which is not defective as determined by our test procedures will not be repaired and will be returned to you.

#### To Obtain Warranty Service

1. Download the Warranty Return Form from [www.fizzics.com](http://www.fizzics.com) to be issued a Return Authorization (RA) number. Follow the directions on the form which include the address to the warranty return center.
2. Once you receive an RA number, please ship the unit in its original packaging. Make sure to include a copy of your original, dated proof of purchase receipt and a copy of the Warranty Return Form in your return shipment.
3. Make sure to include a return shipping address within the package.
4. Do not return your system for warranty service without receiving a Return Authorization (RA) number from Fizzics. Any Fizzics system that is returned without a RA number will be returned to the sender without servicing.

**Please retain your original sales receipt, the carton, packaging materials, all printed material and original Warranty Return Form.**

## SAFETY INSTRUCTIONS

Please read all of the safety instructions before using the Fizzics system. When using the system always exercise basic safety precautions, including the following:

- **ONLY USE THE FIZZICS SYSTEM FOR ITS INTENDED PURPOSE**
- **DO NOT OPERATE YOUR SYSTEM IN THE PRESENCE OF EXPLOSIVE FUMES**
- **DO NOT TAMPER WITH THE CONTROLS**
- **DO NOT OPERATE THIS SYSTEM WHEN PARTS ARE MISSING OR BROKEN**
- **DO NOT USE THIS SYSTEM FOR COMMERCIAL USE**
- **TO REDUCE RISK OF INJURY, DO NOT ALLOW CHILDREN TO PLAY WITH THE SYSTEM**

## FOR BEST PERFORMANCE

Please follow these steps.

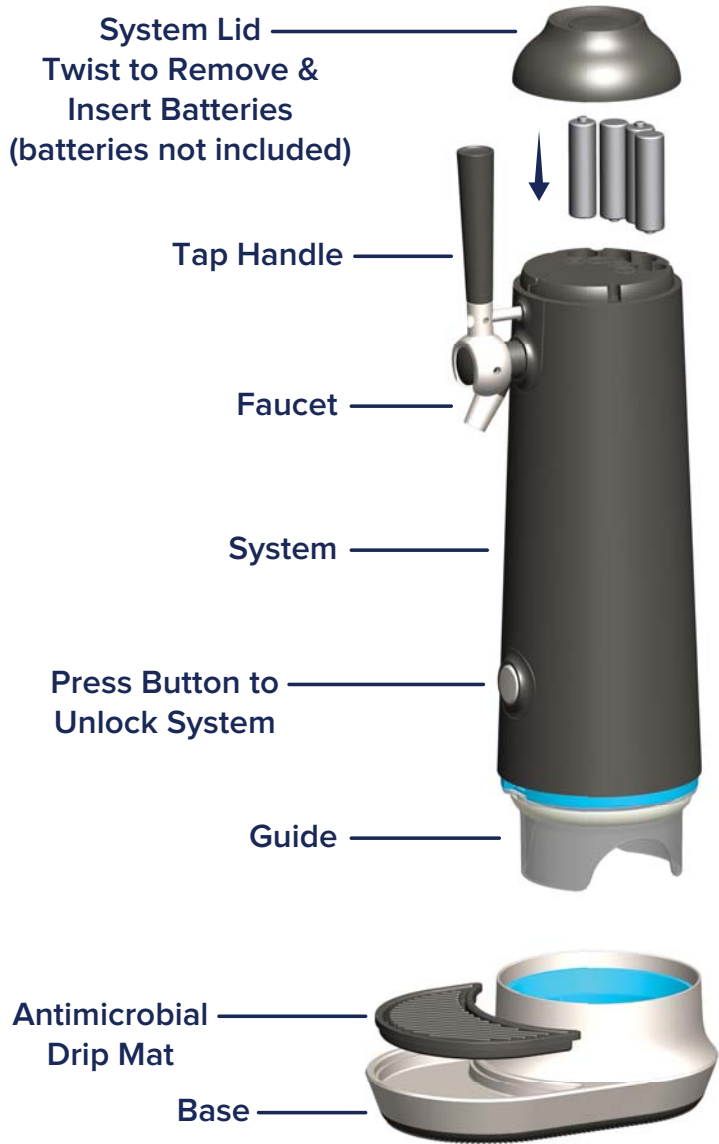
- **Fizzics Waytap is optimized for carbonated beers and works well with most ciders.**
- **For cleaning, simply use a clean beer can or bottle, fill with warm water and run through the system.**
- **Allow the unit to air dry off the base after cleaning.**
- **The stainless steel draft tube is not removable. Do not pull on it or try to remove it.**
- **Always keep the contents of your beer in the bottle or can when using the system.**

## LIMITED WARRANTY

The Fizzics warranty does not cover the following:

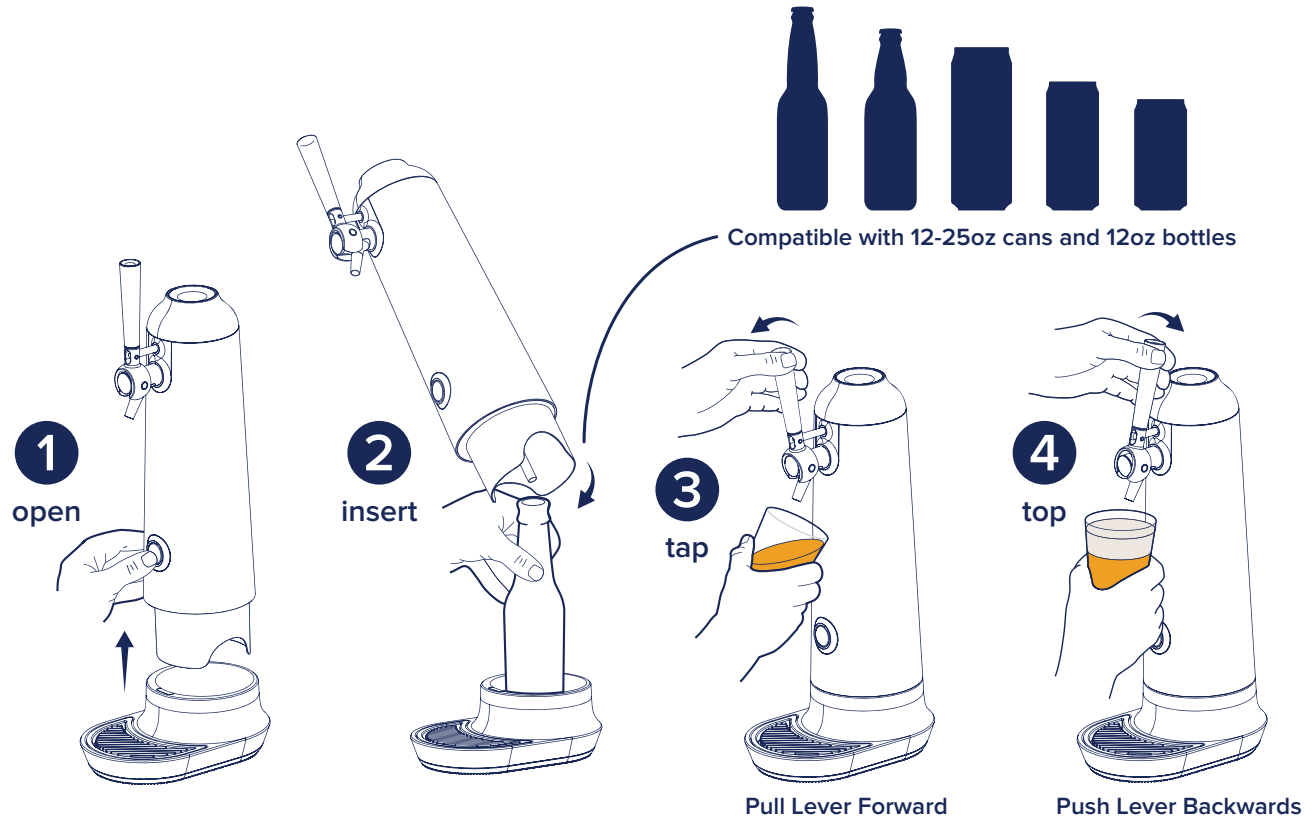
- **Fizzics warranty does not cover removal of the draft tube.**
- **Fizzics warranty does not cover damage caused by abuse, misuse, loss, improper handling, alterations, accident, neglect, disassembly.**
- **Repairs to your Fizzics device performed by any source other than Fizzics unconditionally voids the warranty.**





## Operation

- Press button to unlock and lift system from system base (Figure 1).
- Insert can or bottle into system base (Figure 2). Tilt and lower system until tube is inserted into can or bottle, and the system locks into system base.
- Place glass under faucet at 45° angle. Pull handle forward to "tap" beer (Figure 3) until the glass is 2/3 filled.
- When you are ready to "top" your beer, straighten the glass and hold under faucet and push handle backward for desired amount of Micro-Foam (Figure 4). Generally 1-2 seconds is ideal.



## System Cleaning

- Press button to unlock and lift system from system base.
  - Place a tall glass filled with warm water into system base. Lower system so tube is inserted into glass and system locks into system base.
  - Place a separate glass under the faucet. Pull handle forward to run water through system for 5 seconds.
  - Antimicrobial drip mat is removable for easy cleaning. If required wipe off system and tube with a damp cloth.
- CAUTION: DO NOT SPRAY WATER INTO THE SYSTEM, FILL THE SYSTEM WITH WATER OR PLACE ANY PART OF SYSTEM IN THE DISHWASHER.**



Patent Pending

**FIZZICS**  
WAYTAP