

Dock and Scan to your iPad[®] Tablet.

Brookstone[®]

iConvert Scanner

For iPad and iPad 2 Tablets



TABLE OF CONTENTS

Warnings and Cautions	2
Location of Parts and Controls	5
Included Accessories	6
Compatibility	7
Power and Dock	7
Download APP (First Time Use)	8
Calibrate	9
Scan and Save	10
Using the Protective Sleeve	11
Care and Maintenance	11
FAQs	14
Specifications	16
Warranty	17

CAUTION

- TO REDUCE THE RISK OF ELECTRIC SHOCK, DO NOT REMOVE COVER. THERE ARE NO SERVICEABLE PARTS INSIDE.
- TO REDUCE THE RISK OF FIRE OR ELECTRIC SHOCK, DO NOT EXPOSE THIS UNIT TO RAIN OR MOISTURE.



The lightning flash with arrow-head symbol within an equilateral triangle is intended to alert the user to the presence of uninsulated “dangerous voltage” within the unit’s enclosure that may be of sufficient magnitude to constitute a risk of electric shock.



The exclamation point within an equilateral triangle is intended to alert the user to the presence of important operating and maintenance (servicing) instructions in the literature accompanying the unit.

IMPORTANT SAFETY INSTRUCTIONS

All of the safety and operating instructions should be read, adhered to and followed before the unit is operated.

SAVE THESE INSTRUCTIONS

DANGER

To reduce the risk of electric shock, burns, fire or injury:

1. Do not use while bathing or in a shower.
2. Do not place or store unit where it can fall or be pulled into a tub or sink.
3. Do not place in, drop or submerge in water or other liquid.
4. Do not reach for unit that has fallen into water. Unplug it immediately.
5. Care should be taken so that objects do not fall and liquids are not spilled onto the unit.

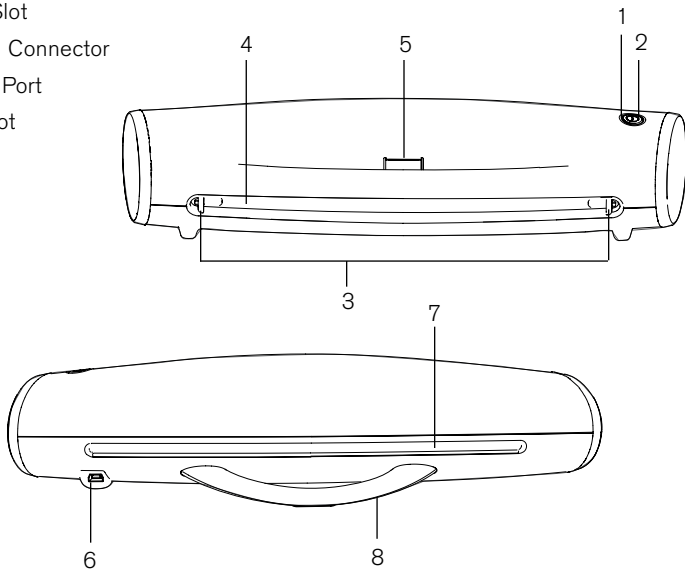
WARNING

1. Close supervision is necessary when this product is used by or near children or mentally disabled individuals.
2. Use this unit only for its intended use as described in this manual.
3. Unplug this unit during lightning storms or when unused for long periods of time.
4. Never drop or insert an object into any opening other than as instructed in this manual.
5. Protect the adapter cord from being walked on or pinched, particularly at plug outlets and the point where it exits the unit.
6. Do not allow adapter cord to touch hot surfaces. Wrap adapter cord loosely around the unit when storing or detach the cord and store separately.

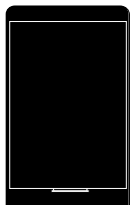
7. The unit should be situated away from direct sunlight or heat sources such as radiators, electric heaters, heat registers, stoves or other units (including amplifiers) that produce heat. Avoid placing on top of stereo or computer equipment that radiates heat.
8. Never block the air openings of the unit with materials such as clothing, plastic bags or papers, or place it on a soft surface such as a bed or couch, where the air openings may be blocked.
9. Do not overload the electrical outlet. Use only the power source as indicated.
10. Never operate this unit if it has a damaged cord or plug, if it is not working properly, or if it has been dropped or damaged, or dropped into water. If the unit's adapter cord or plug is damaged, do not attempt to fix it yourself.
11. To avoid the risk of electric shock, do not disassemble or attempt to repair the unit. Incorrect repair can cause risk of electric shock or injury to persons when unit is used.
12. Do not operate in the presence of explosive and/or flammable fumes.
13. Never remove the plug from the outlet by pulling the adapter cord.

LOCATION OF PARTS AND CONTROLS

1. Power LED
2. Power Button
3. Paper Guides
4. Feed Slot
5. 30-Pin Connector
6. Power Port
7. Exit Slot
8. Stand



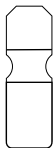
INCLUDED ACCESSORIES



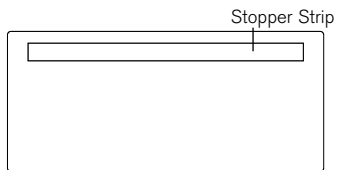
Protective Sleeve



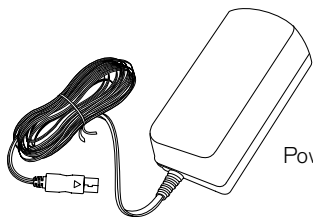
Calibration Sheet



Lens Cleaner



Roller Cleaner



Power Adapter

COMPATIBILITY

iPad

iPad 2

POWER AND DOCK

1. Connect the POWER ADAPTER to the POWER PORT on the scanner and then plug into a wall outlet.
2. Press and hold the POWER BUTTON for up to 3 seconds to turn the scanner on. The POWER LED will blink blue for a moment and then remain solid.
3. Turn on your iPad tablet and dock it carefully on the 30-PIN CONNECTOR on the scanner. Make sure it sits firmly in place.
4. To turn the scanner off, press and hold the POWER BUTTON again. The POWER LED will shut off.

Notes:

- Do not dock iPad to the scanner when the POWER LED is blinking. Wait until the blinking stops.
- Check the battery level in the upper-right corner of your iPad tablet's home screen. Make sure it's at least above 20% when docked. If not, please charge the battery prior to docking.

DOWNLOAD APP (FIRST TIME USE)

1. After you power on the Scanner, and power on and dock your iPad, a message will appear on your iPad tablet's screen which will guide you to the App StoreSM for the free iConvert Scan.
2. Follow the on-screen instructions to complete the installation.
3. Upon completion, the iConvert Scan icon will appear on your iPad tablet's home screen.

Notes:

- Make sure that your iPad tablet is connected to a Wi-Fi network before you try to download and install applications. Refer to your iPad tablet's user manual for more information.
- Download one App at a time and do not do anything else on the iPad while downloading an App.

CALIBRATE

To get the best material recognition results, please follow the steps below before first use and periodically during the Scanner's life.

1. Remove the film on the front and back of the CALIBRATION SHEET before use.
2. Make sure the CALIBRATION SHEET is clean and free of dust before use.
3. While in the iConvert Scan, tap the Settings icon in the top right hand corner of your iPad tablet's screen.
4. Choose Calibrate.
5. Adjust the PAPER GUIDES to center the CALIBRATION SHEET, and to ensure it will load straight into the FEED SLOT.
6. Insert the CALIBRATION SHEET, with the printed side facing UP, into the feed slot.
7. Tap the Calibrate button on your iPad tablet's screen to begin calibration.
8. The CALIBRATION SHEET will pull through the FEED SLOT while adjusting the calibration of the scanner. The sheet will come out of the EXIT SLOT when calibration is complete.
9. The screen will return to the Scan screen and show the message "Calibration Done". Tap the "OK" button.

SCAN AND SAVE

SCAN

1. Adjust the PAPER GUIDES to center the photo/document, and to ensure it will load straight into the FEED SLOT.
2. Insert a photo/document, facing UP, into the center of the FEED SLOT of the scanner until it's gripped by the roller.
3. Tap the Scan button on your iPad tablet's screen. The scan starts with the real-time preview of the photo/document on the screen.
4. When the photo/document is displayed in the center of the iPad tablet's screen, the scan is complete.

Note:

To avoid possible interruption during scanning, please turn off your iPad tablet's Notification function. For more information, please refer to your iPad tablet's user manual.

SAVE

1. Tap the Save button on your iPad tablet's screen. The image will be saved to your iPad tablet's Photos folder. If you do not want to save that scan, tap Cancel.
2. To view your scanned photos/documents, tap the Photos folder icon on your iPad tablet's home screen.

USING THE PROTECTIVE SLEEVE

Some old photos or documents may be fragile, curled or even bent. To protect them from possible damage during scanning, use the PROTECTIVE SLEEVE (included).

1. Peel back the film on the PROTECTIVE SLEEVE before use.
2. Place the photo inside the PROTECTIVE SLEEVE face up, so the image shows through the clear film. Carefully push the film over the photo, avoiding bubbles and creases.
3. Feed the sealed end of the PROTECTIVE SLEEVE into the FEED SLOT first for scanning.
4. Make sure the roller and lens are clean and free of dust to ensure a high quality scan.

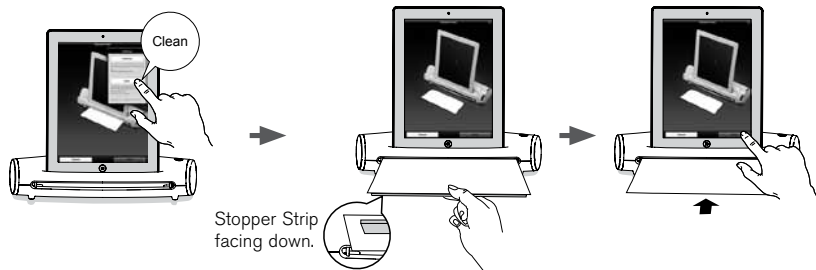
Important: Do not place the photo into the PROTECTIVE SLEEVE if the photo has been laminated.

CARE AND MAINTENANCE

Over time, the roller and lens of your Scanner may become dirty and dusty. Follow the steps in the following two sections to clean both the roller and the lens to make sure your photos/documents scan as crisp and clean as possible.

CLEANING THE ROLLER

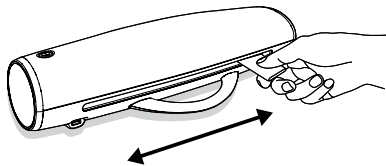
1. While in the iConvert Scan, tap the Settings icon in the top right hand corner of your iPad tablet's screen.
2. Tap Clean.
3. Grip the ROLLER CLEANER by the STOPPER STRIP, with the STOPPER STRIP facing DOWN.
4. Insert the ROLLER CLEANER'S edge into the FEED SLOT.
5. Tap the Clean button. The ROLLER CLEANER will be pulled into the slot, then will be halted by the STOPPER STRIP, allowing the roller to spin and clean itself on the ROLLER CLEANER.
6. When the roller stops spinning, pull the ROLLER CLEANER back out of the FEED SLOT.
7. The screen will return to the Scan screen and show the message "Cleaning Done". Tap the OK button.



CARE AND MAINTENANCE (CONTINUED)

CLEANING THE LENS

1. Power off the scanner.
2. Hold the Handle of the LENS CLEANER.
3. Insert the LENS CLEANER, with the fabric side facing UP, all the way into the EXIT SLOT of the scanner.
4. Slide the LENS CLEANER back and forth, all the way to either end of the EXIT SLOT, to clean the lens. Repeat a few times.



FAQs

NO POWER

- Make sure you connected the POWER ADAPTER to the POWER PORT on the scanner correctly, and then plugged it into a live wall outlet
- Make sure you have turned on the scanner via the POWER BUTTON

iPad SCANNER DOES NOT RESPOND WHEN iPad IS DOCKED

- Make sure the iPad is securely docked on the 30-PIN CONNECTOR
- iPad is off or locked. Check the documentation that came with your iPad for instructions

THE SCANNED IMAGE IS POOR

- Please clean and calibrate the scanner if the scan result is poor
- You may also want to reorient the item for scanning

CANNOT FEED THE PAPER

- Make sure the document/photo is gripped and slightly pulled into the feed slot prior to scanning
- Remove the paper from the feed slot and insert it again
- Use the PROTECTIVE SLEEVE

FAQs (CONTINUED)

CANNOT SCAN

- iPad is low in battery (under 20%) when docked to the scanner.
Charge your iPad and then try again
- Close other running apps on iPad to release memory. (Refer to the latest iPad User Guide on the “Force an app to close” section to close an app.)

iPad SCANNER IS SLOW OR HUNG UP

- When the power LED is flashing and/or a busy icon appears, do not press any buttons, un-dock your iPad tablet and the scanner from its power source and try again
- If the scanner is not working properly (e.g. the activity icon remains), try forcing the iConvert Scan app to close, reconnect the power and then restart iPad and the scanner.

iPad is a trademark of Apple Inc., registered in the U.S. and other countries.

“Made for iPad” means that an electronic accessory has been designed to connect specifically to iPad, and has been certified by the developer to meet Apple performance standards. Apple is not responsible for the operation of this device or its compliance with safety and regulatory standards. Please note that the use of this accessory with iPod, iPhone, or iPad may affect wireless performance.

SPECIFICATIONS

Scanner Type	CIS Sheet-fed scanner
Light Source	LED (R, G, B)
Scan Size	Up to Legal size (8.5" W x 14" L)
Scan Mode	Color
Scan Resolution.....	300 dpi
Ports	Power Port; iPad 30-pin connector
Power Requirement	AC 100V to 240V, 50/60 Hz; 5V, Power Adapter
Power Consumption	5W (Maximum)
File Format	JPEG
Dimensions	12.1" W x 4.4" D x 2.8" H
Weight	655g (1.44 lbs.)
Minimum System Requirements	iPad 2 or iPad with iOS 4.3.5 or later

ONE (1) YEAR LIMITED WARRANTY

Brookstone® warrants this product against defects in materials and/or workmanship under normal use for a period of ONE (1) YEAR from the date of purchase by the original purchaser (“Warranty Period”). If a defect arises and a valid claim is received within the Warranty Period, at its option, Brookstone will either 1) repair the defect at no charge, using new or refurbished replacement parts, or 2) replace the product with a new product that is at least functionally equivalent to the original product, or 3) provide a store credit in the amount of the purchase price of the original product. A replacement product or part, including a user-installable part installed in accordance with instructions provided by Brookstone, assumes the remaining warranty of the original product. When a product or part is exchanged, any replacement item becomes your property and the replaced item becomes Brookstone’s property. When a store credit is given, the original product must be returned to Brookstone and becomes Brookstone’s property.

Obtaining Service: To obtain warranty service, call Brookstone Limited Warranty Service at 1-800-292-9819. Please be prepared to describe the product that needs service and the nature of the problem. A purchase receipt is required. All repairs and replacements must be authorized in advance. Service options, parts availability and response times will vary. You are responsible for delivery and the cost of delivery of the product or any parts to the authorized service center for replacement, per our instructions.

Limits and Exclusions: Coverage under this Limited Warranty is limited to the United States of America, including the District of Columbia and the U.S. Territories of Guam, Puerto Rico, and the U.S. Virgin Islands. This Limited Warranty applies only to products manufactured for Brookstone that can be identified by the “Brookstone” trademark, trade name, or logo affixed to them or their packaging. The Limited Warranty does not apply to any non-Brookstone products. Manufacturers or

suppliers other than Brookstone may provide their own warranties to the purchaser, but Brookstone, in so far as permitted by law, provides these products "as is." This warranty does not apply to: a) damage caused by failure to follow instructions relating to product's use or the installation of components; b) damage caused by accident, abuse, misuse, fire, floods, earthquake or other external causes; c) damage caused by service performed by anyone who is not a representative of Brookstone; d) accessories used in conjunction with a covered product; e) a product or part that has been modified to alter functionality or capability; f) items intended to be periodically replaced by the purchaser during the normal life of the product including, without limitation, batteries or light bulbs; g) any product sold "as is" including, without limitation, floor demonstration models and refurbished items; or h) a product that is used commercially or for a commercial purpose.

BROOKSTONE SHALL NOT BE LIABLE FOR INCIDENTAL OR CONSEQUENTIAL DAMAGES RESULTING FROM THE USE OF THIS PRODUCT, OR ARISING OUT OF ANY BREACH OF THIS WARRANTY. TO THE EXTENT PERMITTED BY APPLICABLE LAW, BROOKSTONE DISCLAIMS ANY AND ALL STATUTORY OR IMPLIED WARRANTIES, INCLUDING, WITHOUT LIMITATION, WARRANTIES OF MERCHANTABILITY, FITNESS FOR A PARTICULAR PURPOSE AND WARRANTIES AGAINST HIDDEN OR LATENT DEFECTS. IF BROOKSTONE CANNOT LAWFULLY DISCLAIM STATUTORY OR IMPLIED WARRANTIES, THEN TO THE EXTENT PERMITTED BY LAW, ALL SUCH WARRANTIES SHALL BE LIMITED IN DURATION TO THE DURATION OF THIS EXPRESS WARRANTY.

Some states disallow the exclusion or limitation of incidental or consequential damages or how long an implied warranty lasts, so the above exclusions or limitations may not apply to you. This warranty gives you specific legal rights and you may also have other rights, which vary from state to state.

Find thousands more
great ideas online

Brookstone[®]

771237

Merrimack, New Hampshire USA 03054 • 800-846-3000 • Brookstone.com