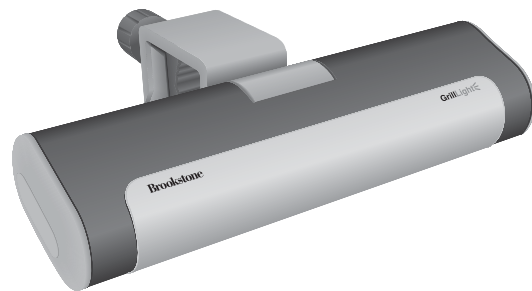


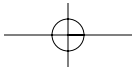
handle-mount grill light



**Brookstone**<sup>®</sup>

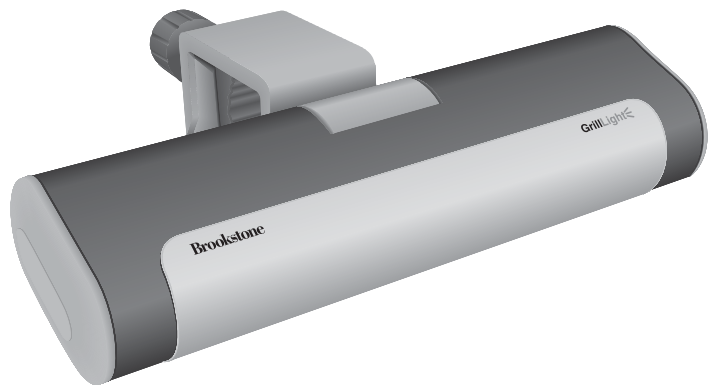
Nashua, New Hampshire 03062  
Customer Service 800-846-3000  
www.brookstone.com

439794



**Brookstone**<sup>®</sup>





## HANDLE-MOUNT GRILL LIGHT

**Brookstone makes life better.**

Our **Handle-Mount Grill Light** clamps securely to your grill handle, pivoting to clearly illuminate your food. Equipped with two long-lasting cold cathode bulbs, the light shines brightly to illuminate even the smallest food items.

The Handle-Mount Grill Light has been thoroughly tested to be certain it meets our own **exacting quality control standards**. Please take a few moments to review the following **important information** before using it.

**Shed some bright light on your meal.**

## WARNING

- Do not attempt to disassemble the unit. There are no user-serviceable parts inside.
- Avoid grease flare-ups.

## BATTERY PRECAUTIONS

- Dispose of the old batteries properly. Do not dispose of the old batteries in a fire.
- Do not leave the batteries lying around where a young child or pet could play with or swallow them. If the batteries are swallowed, contact a physician immediately.
- The batteries may explode if mistreated. Do not attempt to recharge or disassemble the batteries.

## GRILL LIGHT OPERATION

### Inserting the Batteries

1. Turn the BATTERY COVER, located on the side of the light, counterclockwise and remove.
2. Insert four D batteries (not included) with the positive sides facing up.
3. Replace the BATTERY COVER and push down and turn clockwise to tighten.

**Note:** When replacing the BATTERY COVER, ensure its positioning reflects that in Fig. 1.

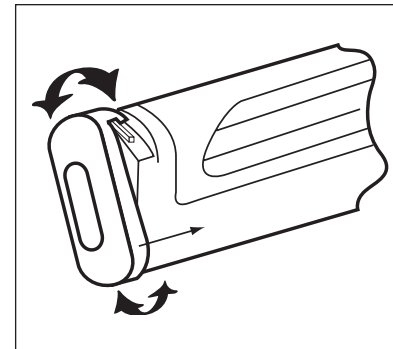





Fig. 1

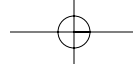
### Powering the Light

1. Press  to turn the light on.
2. Press  again to turn the light off.

### Using the Timer

Press . The light illuminates for six minutes, then shuts off automatically.

**Note:** Each press of  resets the timer for six minutes.



### Mounting the Light

1. Open the MOUNTING CLAMP by turning the knob counterclockwise.
2. Place the MOUNTING CLAMP over your grill handle or the lip of a nearby side table.
3. Tighten the MOUNTING CLAMP by turning the knob clockwise and secure it in place.
4. Adjust the angle of the light by moving the head up or down.

**Note:** Do not place the unit closer than two feet of the exposed cooking surface. The excess heat may cause the unit to overheat, malfunction or melt.

## BATTERY REPLACEMENT GUIDE

Replace batteries when any of the following conditions occur:

- Both bulbs do not light.
- Bulbs are dim.
- One bulb lights and the other does not.

**Note:** The lightbulbs are Cold Cathode fluorescent bulbs and do not need replacement. If one or both bulbs stop working, replace the batteries.

